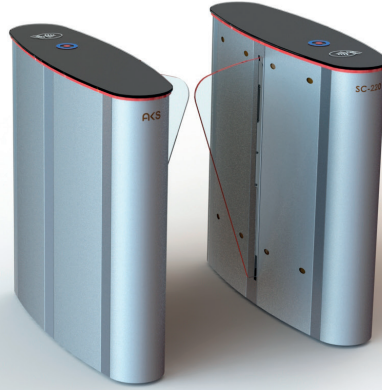




SPEED GATE TURNSTILES SC-220



Body	: 304 quality stainless steel, Top plate Tempered glass, indoor use.
Mechanism	: CNC machined, torque controlled mechanism.
Wings	: Angular motion tempered glass. (Optional Polycarbonate or plexiglass)
Dimensions	: 305x1020x1000 mm, Wingspan:250 mm, Transition range 550 mm, Single ~80kg, Double ~95kg
Indicators	: Double-colored LED light under the upper table and on the upper table, LED light on the wing.
Energy and Power	: 176-264 V AC 50-60 Hz / 24V DC Max: 50W
Temperature	: 0 / +60 °C
Working Mode	: Two-way locked, one-way locked, one-way free, both directions free, security and comfort mode.
Features	: Memory mode, service port, internal operation and transition counters.
Outputs	: Dry contact pass information separately for both directions, PC control port.
Emergency	: Free mode with emergency input. Free mode when no energy with optional battery addition.
Safety Status	: With the safety status input, the turnstile goes into locked mode and never opens.
Capacity	: 45 people per minute (with memory mode)
Usage Area	: Plazas, business centers, luxury office entrances, municipalities. It provides comfortable passage compared to other turnstile types.
Option	: Wing logo, RF control card, counter, button, leak alarm siren, black stainless.

