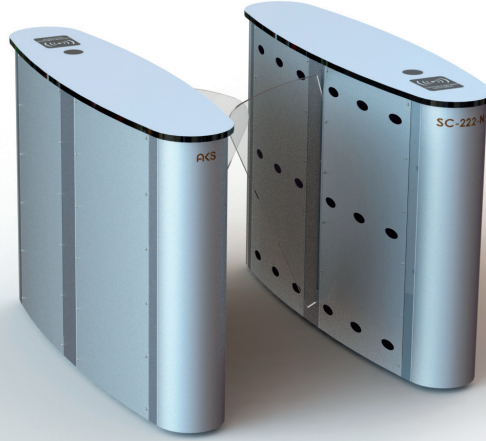




# SPEED GATE TURNSTILES SC-222-N



<b>Body</b>	: 304 quality stainless steel, top plate 304 quality stainless steel, indoor use.
<b>Mechanism</b>	: CNC machined, torque controlled mechanism.
<b>Wings</b>	: Angular motion tempered glass. (Optional Polycarbonate or plexiglass)
<b>Dimensions</b>	: 375x1485x1000 mm, Wingspan 280 mm, Transition range 550-600 mm, Single ~130kg, Double ~145kg
<b>Indicators</b>	: Double-colored LED light on the upper table, LED light on the wing.
<b>Energy and Power</b>	: 176-264 V AC 50-60 Hz / 24V DC Max: 80W
<b>Temperature</b>	: 0 / +60 °C
<b>Working Mode</b>	: Two-way locked, one-way locked, one-way free, both directions free, security and comfort mode.
<b>Features</b>	: Memory mode, service port, internal operation and transition counters.
<b>Outputs</b>	: Dry contact pass information separately for both directions, PC control port.
<b>Emergency</b>	: Free mode with emergency input. Free mode when no energy with optional battery addition.
<b>Safety Status</b>	: With the safety status input, the turnstile goes into locked mode and never opens.
<b>Capacity</b>	: 45 people per minute (with memory mode)
<b>Usage Area</b>	: Plazas, business centers, luxury office entrances, municipalities. It provides comfortable passage compared to other turnstile types.
<b>Option</b>	: Wing logo, RF control card, counter, button, leak alarm siren, black stainless.

